

**Power Jet-Light ELP 236 / ELP 236 110****Operating Instructions****Maintenance and care**

**Important!** The work lamp contains no parts that have to be serviced by the user.

**Warning!** Always disconnect the power plug from the mains prior to performing any kind of work on the lamp.

Disregard can pose the risk of accident and / or injury.

**Caution!** For safety reasons the lamp must not be cleaned with water or other liquids, and never be immersed into water.

Use only a clean, lint-free cloth to clean the lamp.

Do not use solvents, gasoline, etc., as this will damage the lamp.

**Disposal**

**Do not dispose of electrical appliances in the regular household waste!**

In accordance with European Directive 2002 / 96 / EG about the disposal of electronic and electrical appliances and its interpretation under national laws, electric tools must be collected separately and have to be recycled in a nonpolluting manner. Contact your municipal or town office about recycling of your disposed appliance.

**Declaration of Conformity and manufacturer**

The CE-Symbol was applied in conformity with the applicable European Guidelines. The Declaration of Conformity is filed with the manufacturer.

**Manufacturer:**

Hugo Brennenstuhl GmbH & Co. KG  
72074 Tübingen · Germany  
[www.brennenstuhl.com](http://www.brennenstuhl.com)



**Hugo Brennenstuhl GmbH & Co. KG**  
Seestraße 1-3 · 72074 Tübingen · Germany  
[www.brennenstuhl.com](http://www.brennenstuhl.com)

0471340/812

  
**brennenstuhl®**  


# Power Jet-Light ELP 236 / ELP 236 110

**Operating Instructions**



## Introduction

Please read these operating instructions carefully and completely before use. They are part of your product and contain important information concerning its operation and handling. All precautions are to be observed when using this product. Ensure that the correct voltage is provided, before the start of operation. If you have any questions need clarification on the handling of the product, please contact your dealer or service center. Please retain these instructions and pass them on to third parties if necessary.

### Intended use

This splash-proof work lamp is suitable for both indoor and outdoor use. With its power cord with plug, it is ready for connection. The polycarbonate cover is impact-resistant. The lamp can be installed and placed onto all normally inflammable surfaces. Any other use than the above-mentioned or any modification is not permitted and can result in damages. In addition it can lead to danger to life, injuries as well as technical malfunctions (such as short circuits, fire, electric shock, etc.).

### Package contents

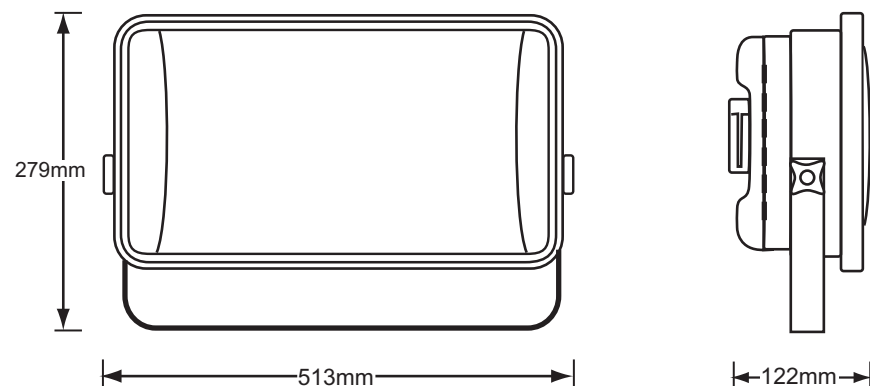
Immediately after unpacking, the package contents must be checked for completeness. Furthermore, check the unit itself for proper condition.

1 Flat lamp, model ELP 236 or ELP 236 110 (see technical label on the lamp)

1 Operation Instructions manual

### Technical data

	ELP 236	ELP 236 110
Model:	240 V~ 50 Hz	110 V~ 50 Hz
Nominal voltage:	3120 W	3120 W
Max. load:	2 x 36 W, 2G11	2 x 36 W, 2G11
Illuminant:	approx. 3 m H05RN-F 3G1.0	approx. 3 m H05RN-F 3G1.0
Power input:	I	I
Protection rating:	IP44	IP44
Type of protection:		



## Safety


### Safety instructions

Damages caused by disregard of these instructions will void the warranty! No liability is accepted for subsequent damages! We accept no liability for property damages or personal injuries caused by improper handling or disregard of safety precautions!

#### Avoid the danger of electric shock!

- Check the lamp and the power cord for damages each time before connecting it to the mains supply. Never use your lamp if you notice any damage.
- Ensure that the power cord is not trapped between the housing and the handle as this can damage the power cord.
- **Caution!** A damaged lamp or a damaged power cord are perilous, since they can cause an electric shock. Refer to the service center or a qualified electrician in case of damages, for repairs or if other problems occur.
- Prior to installation, make sure that the mains voltage available matches the required operating voltage of the lamp.
- Never open the work lamp when it is connected to the mains. Disregard can pose the risk of death by electric shock!

#### Avoid the risk of injury and fire hazard!

- **Risk of injury!** Check the illuminant and the lamp cover for damages immediately after unpacking. Do not use the lamp in case the illuminant or the lamp cover is damaged. Refer to the service department for a replacement in case of any defects.
- Immediately replace a damaged protective cover.  Do not use the light without flawless protective cover.
- Immediately replace a defective illuminant with a new one. Always disconnect the power cord from the mains supply before replacing an illuminant.
- **Fire hazard!** Make sure that the distance between the lamp and the illuminated surface is at least 0.1 m. Never leave the lamp unattended during operation.
- Do not cover the lamp. Excessive heat can cause a fire.
- Do not use the work lamp in environments prone to the danger of an explosion if flammable liquids, gases or dusts are present. Danger to life!
- Keep the work lamp away from children. Children cannot calculate the risk of electric current.
- Do not leave the lamp or packaging material unattended. Plastic sheets, bags, parts, etc. can become dangerous toys for children.

## Operation

### Setting up the lamp

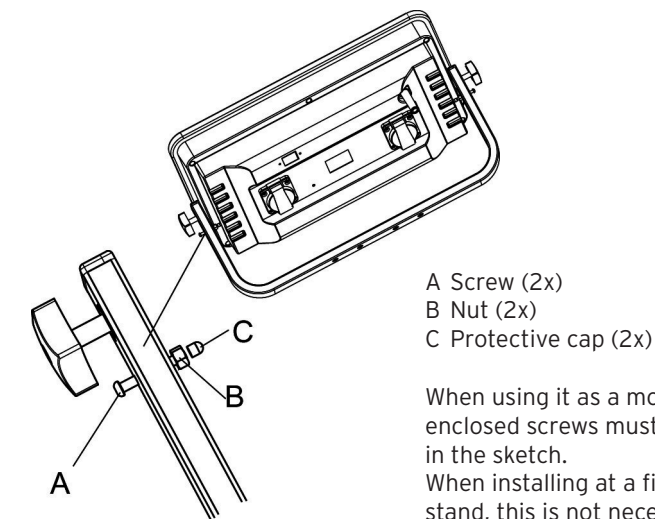
Place the lamp on a dry and even surface. Only use the lamp with the handle opened. The lamp can be switched on and off via the switch which is located on the backside.

### Mounting the lamp on a tripod

The lamp can be mounted onto a suitable tripod through the holes on the bracket (fixings not included!). Ensure that the tripod is sufficiently stable.

### Replacing the illuminant

- **Warning!** Always disconnect the power plug from the mains outlet prior to performing any kind of work on the lamp. Disregard can pose the risk of accident and / or injury!
- **Warning!** Let the lamp cool down completely. Disregard can pose the risk of injury.
- Use a clean, lint-free cloth to change the illuminant.
- Only use illuminants according to the specifications mentioned in the section »Technical Data«.
- Place the work lamp with the backside facing downward.
- Remove the rubber lip by pressing it downward.
- Use a Phillips screwdriver to remove the 6 safety screws from the housing.
- Remove the lamp cover.
- Remove the illuminant's retaining clip and pull the illuminant upwards.
- Gently push the new illuminant downward into the lamp socket. Fix the illuminant by engaging the retaining clip.
- Reattach the lamp cover to the housing.
- Fasten the lamp cover with the 6 safety screws.
- Slide the rubber lip back over the lamp cover. Ensure that the rubber lip locks the lamp cover and housing properly. Your lamp is ready for operation.



- A Screw (2x)
- B Nut (2x)
- C Protective cap (2x)

When using it as a moveable light the enclosed screws must be affixed as shown in the sketch. When installing at a fixed location or on stand, this is not necessary.

